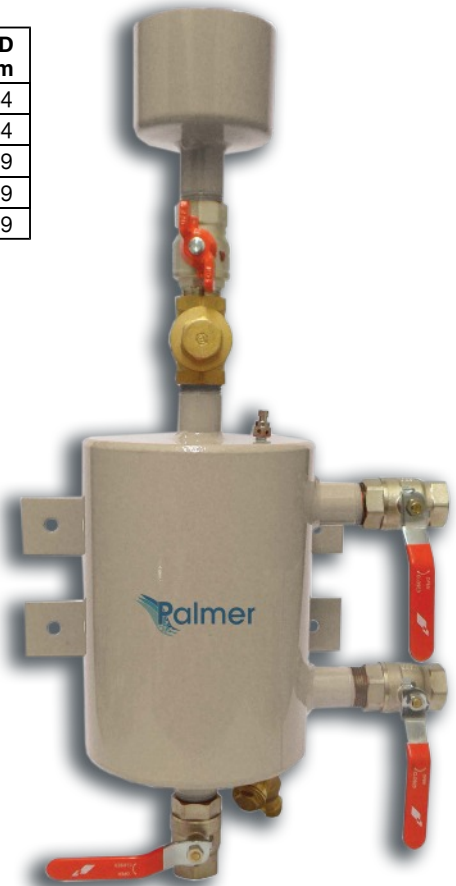


V (L)	L mm	H mm	A mm	Ø D mm
3.5	545	250	117	154
5	625	330	198	154
10	635	340	207	219
15	805	510	310	219
25	1133	718	558	219



- Comes complete with isolation valves, air vent, mounting brackets and non-return valve.
- Sizes in litres: 3.5, 5, 10, 15 and 25.
- 10 bar nominal pressure.
- 100°C maximum temperature.
- 1"/DN25 connection size.
- 4 mm steel construction.
- Conforms to the pressure equipment directive 97/23/CC.
- Note: the 3.5 L dosing pot has one mounting bracket.

