

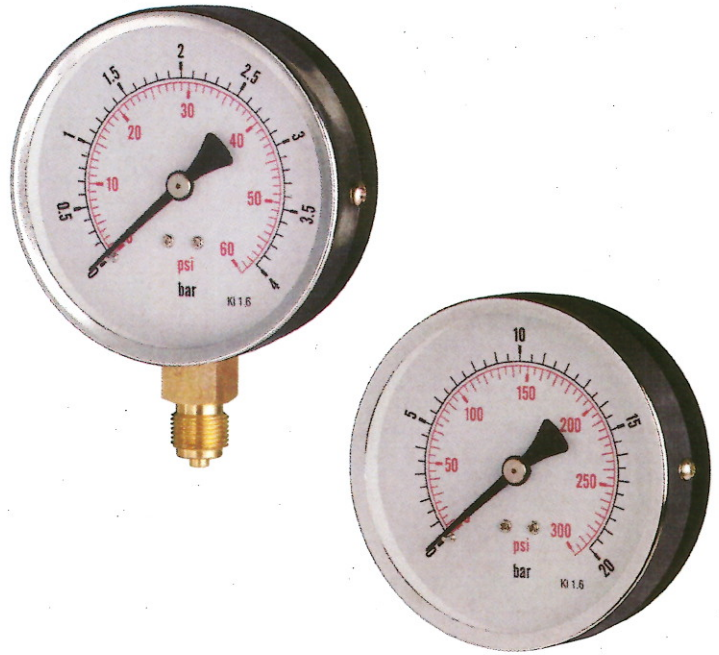
# 100mm Diameter C1.6 HVAC Specification Dry Pressure Gauge

## Application

For the measurement of fluid liquids that are not:- highly viscous, high temperature (over 60°C), likely to solidify/crystallize or corrosive to copper or tin alloys.

Specifically designed for the UK's heating / ventilation, mechanical services and air conditioning markets.

Also suitable for, gases (excluding oxygen or acetylene) up to 25 bar maximum.



## Description

**Nominal Size**  
100mm

**Accuracy**  
+/- 1.6% FSD

**Scales**  
BAR Outer (Black) & PSI Inner (Red) - Pressure  
BAR Outer (Black) & "HG Inner (Red) - Vacuum

**Ranges**  
-1 BAR Vacuum to 0/70 BAR Pressure

**Mounting Options**  
Bottom - Direct Mounting (standard)  
Bottom - Surface Mounting with Rear 3 Hole Flange

Centre Back – Direct Mounting Only (standard)

**Operating Temperature**  
Ambient: -20/+60°C  
Medium: +60°C maximum

**Temperature Effect**  
Variation in indication caused by temperature  
 $\pm 0.04 \times (t_2 - t_1)\%$  of the span  
t1 is the reference ambient temperature in °C  
t2 is the ambient temperature in °C

**Ingress Protection**  
IP 40 as per EN 60529

**Case**  
Enameled Steel - Black

**Bezel**  
Chrome Plated Steel

**Window**  
Acrylic - Crystal clear

**Pressure Element**  
CU Alloy - Sealed Bourdon tube C-Type

**Joints**  
Soldered with tin alloy

**Movement**  
High Precision Brass

**Process Connection & Block**  
Brass - 3/8" BSP (parallel) male (standard)  
Brass - 17mm Square block

**Rear Blow-Out**  
30mm Black rubber

**Pointer**  
Aluminium - Black

**Dial**  
Aluminium - White

**Special Options**  
Other scales/ranges  
Customer logo on dial  
Adjustable red pointer window  
Other process connections

**FULL RANGE OF MATCHING HVAC SPECIFICATION TEMPERATURE GAUGES AND  
ACCESSORIES ALSO AVAILABLE**

